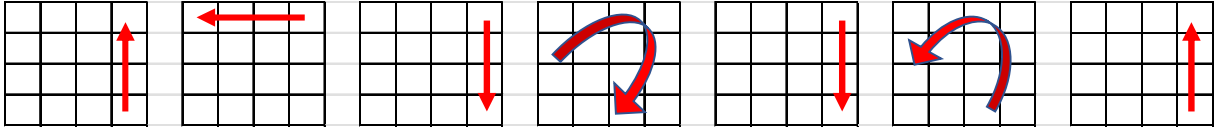
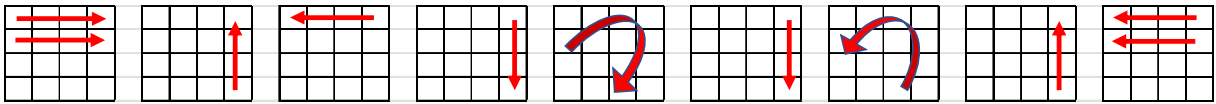
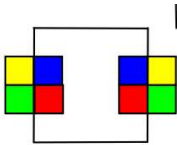


# Le 4x4x4

1. Retourner une arête :  $R U R' F R' F' R$

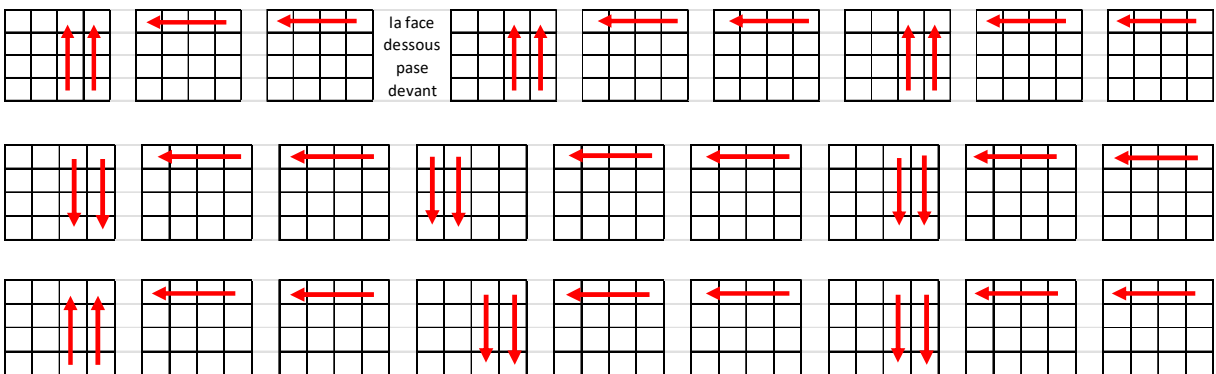


2. La dernière arête :  $Uw' R U R' F R' F' R Uw$



3. Parité pour la croix jaune :

$Rw U2 \times Rw U2 Rw U2 Rw' U2 Lw U2 Rw' U2 Rw U2 Rw' U2$



4. Parité des coins

**tous les mouvements se font 2 fois :  $r^2 U^2 r^2 Uw^2 r^2 u^2$**

